



October 8, 2019

Office of Hopkins County Judge  
The Honorable Robert Newsom  
Post Office box 288  
Sulphur Springs, Texas 75483

**Farmers Electric Cooperative Member: Billy D  
Waters Jr. Service Order Number: 1907004900**

**Dear Judge Newsom,**

Farmers Electric Cooperative, Inc. is requesting permission to re-route existing electrical power distribution facilities across CR 3520 which is located approximately 12,650' TO CR 3518, in Hopkins County, Texas.

Site location map and construction sketches are enclosed. The construction sketch details the proposed work. All road crossing will have a minimum vertical clearance of 22 feet.

**If you have any questions, please feel free to contact met at any time at 903-441-1368.**

Sincerely,

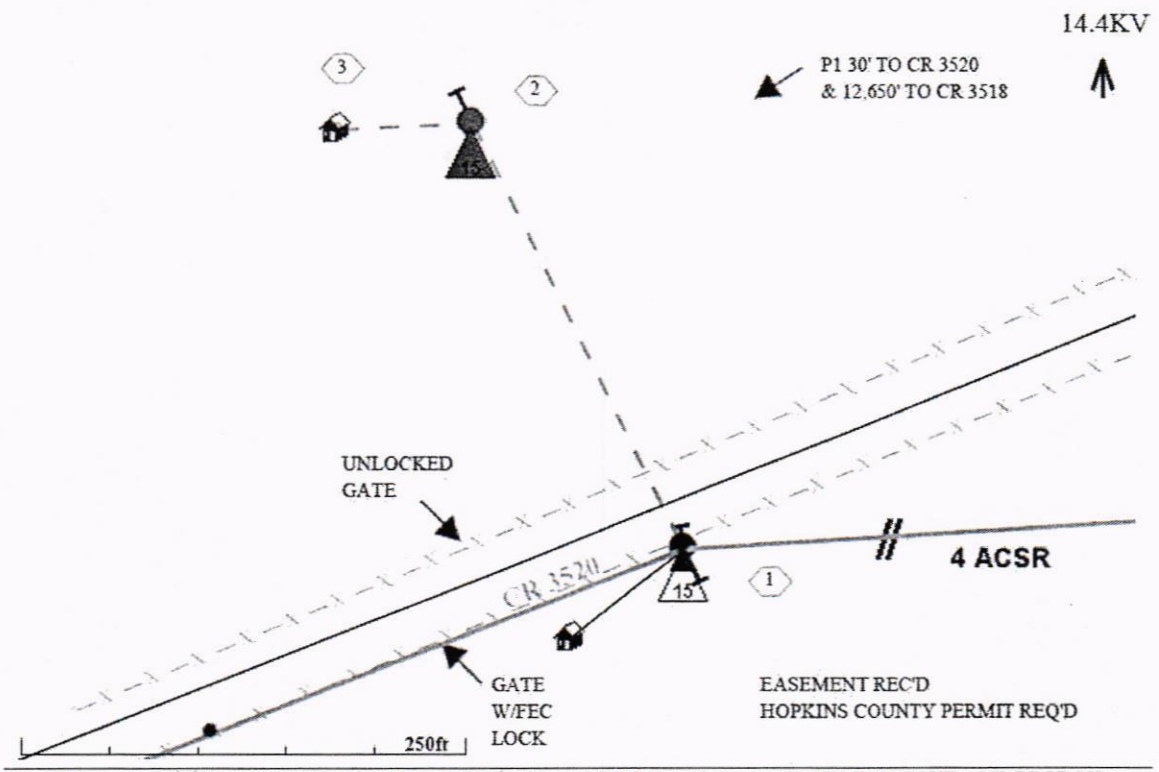
*Matt Walker*

Engineering Assistant  
mwalker@farmersselectric.coop

Enclosures

**Submitted by:**

Brandon Darrow  
Field Engineering Coordinator  
Office 903.453.0740



Misc. Remarks: EXTEND OH PRIMARY 1 SPAN ACROSS CR 4762 FROM P#090574, HANG XFMR/CUTOUT, AND DROP OH SERVICE TO 200A OH PMP SERVING 2000SF STL FRAME HOUSE BEING BUILT. 1 EASEMENT REC'D. HOPKINS COUNTY



Job Site Location

Service Order No. 1907004900 – Billy D Waters